

The Muse Tech's Intermediate Guide to "Fireflying"¹

1.0



Disclaimer: This is an **intermediate** guide to assist with the success of this beta test. This is not shared as a means to "hack" Firefly. We stand with use policies established by Adobe.

Adobe, a company committed to unity isn't trying to "punish" you. It will direct you. Ever hear someone say, "It's not so much what you say, as much as it is how you say it?" Before you begin getting your optimum results, you must understand the language Firefly speaks.

MTC, LLC started an in-house design guide for our team to document our progress with Firefly. After seeing some of the comments in the group, we took a vote. Since the beta is for in-house use only, we decided to share our with the Facebook and Discord groups.

This guide is to help Artists attempting to translate the mind's image into text to achieve optimum results from their prompts, based on our prompt outcomes. With that said, **Let's have some fun!**

¹ Adobe firefly beta test

Intermediate Guide to “Fireflying²”: What’s New

In response to the Introductory Guide to Fireflying’s feedback, we shared this intermediate guide. If you find this a bit much and haven’t read the first release, please give that a try first. Missed it? It’s published in the AE Insider Groups, on the muse website, and Facebook page.



Tech Comments:



If you ever coded a website with a team, you are familiar with lines that are not to the computer but the user. You may see tech comments or “tips” throughout. Look for the little robot.

Firefly Lingo:

We documented our team results to build a library of lingo that Firefly seems to like.

Firefly Chat

With feedback from users, we have released “**The intermediate Guide to Fireflying**” 1.0. We have expanded the Intro, with explanations and tech tips. A special thanks to “Tiger Luke” whose questions led to the release of first version of **Firefly Chat**, where we use some old DOS tricks to better communicate with Firefly. Ready to soar? Let’s go!

Your Muse Tech

² Adobe firefly beta test

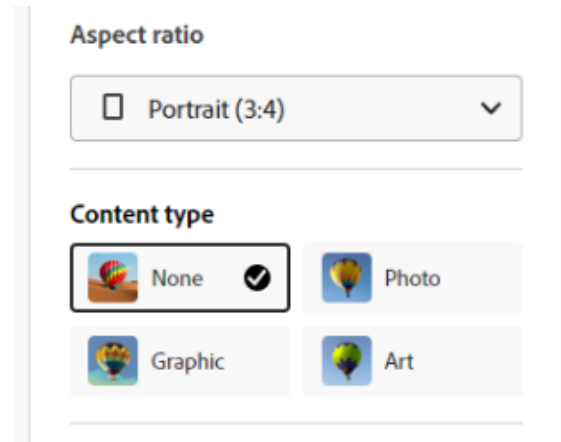
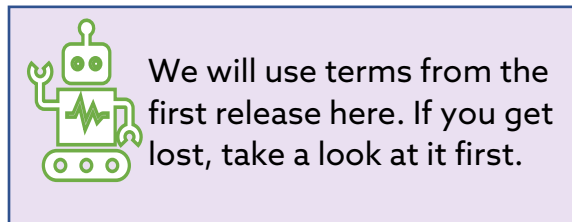
Firefly Chat 1.0: Speaking it's Language (New)

Firefly is designed to understand command prompts in "everyday language" much like a graphic interface translates mouse clicks and keyboard commands.

Understanding how your prompt is understood goes back to English grammar and DOS.

First Set Your Scene. Great terms exist in non-AI Graphic Design applications today. We will add a **Palette, Style, Tech, Background**³.

At this point, All the Firefly "content options are off". To best understand what Firefly understands, we leave off the content type. You are chatting directly with Firefly.



Firefly Chat Cheat Sheet

This is a growing list of words we use to chat with Firefly. Feel free to use and/or come up with your own. As long as you follow the same parameters, your results should be astounding! These are words we use throughout the tutorial:

Style:	Tech:	Palette:
Midcentury Moder	Goo	Pastel
Traditional	Bubble	Vibrant
Transitional	Animation	Ablaze
Maximalist	Paint	Beaming
Modern	Motion	Bold
Farmhouse	Blur	Vivid
Minimalist	Flower	Bright
Eclectic	Water	Colorful
Retro	Sculpture	Dappled
English Country Style	Stone	Deep
		Dark

³ Background is covered in the first release.

Style: Firefly's Lingo 1.0

Think of Styles in non-AI Design applications. Firefly understands those very well.

[your style word] - style

cute-manga-bubble-style

Refresh



cute-manga-bubble-style

Refresh

Now, add your first word.

[style]
[first word]

Cute-manga-bubble-style
play

Refresh

Your first word sets the mood of Firefly.



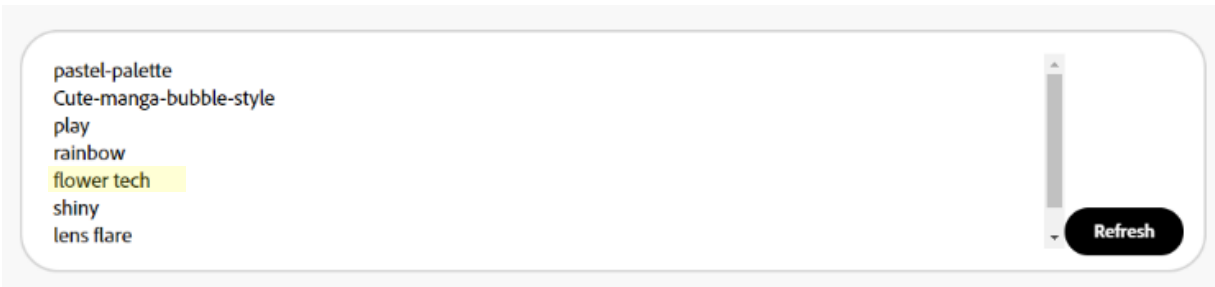
www.musetechconsulting.com

Adobe Advocate and User since 1995.

Tech: Firefly's Lingo 1.0

Think of techniques of drawing. Firefly understands that as well. If you have a long string, enter "[your technique]-tech", but the line break should suffice.

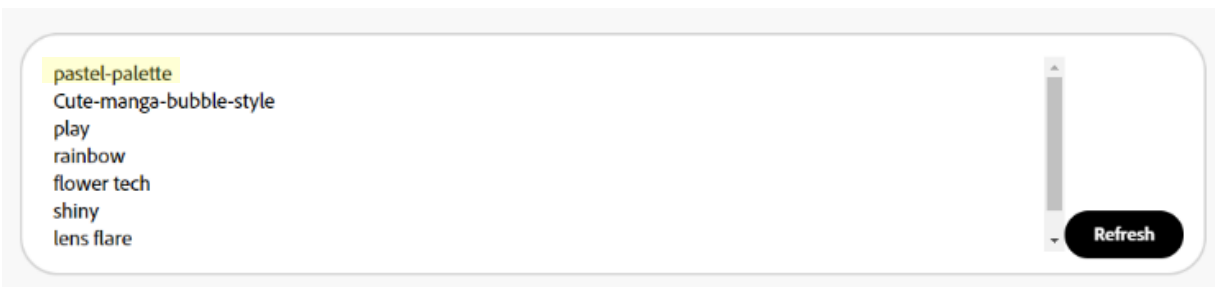
[your tech word] - tech



Palette: Firefly's Lingo 1.0

Think of Palettes. Firefly understands that as well.

[your palette word] - palette

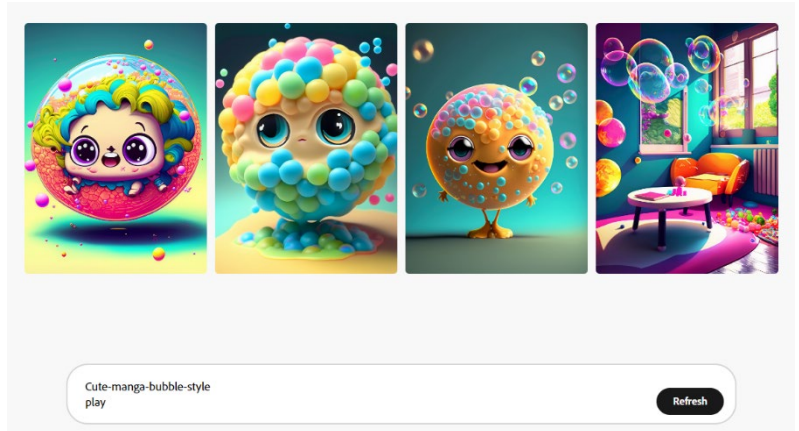


Firefly Chat: Firefly's Lingo 1.0

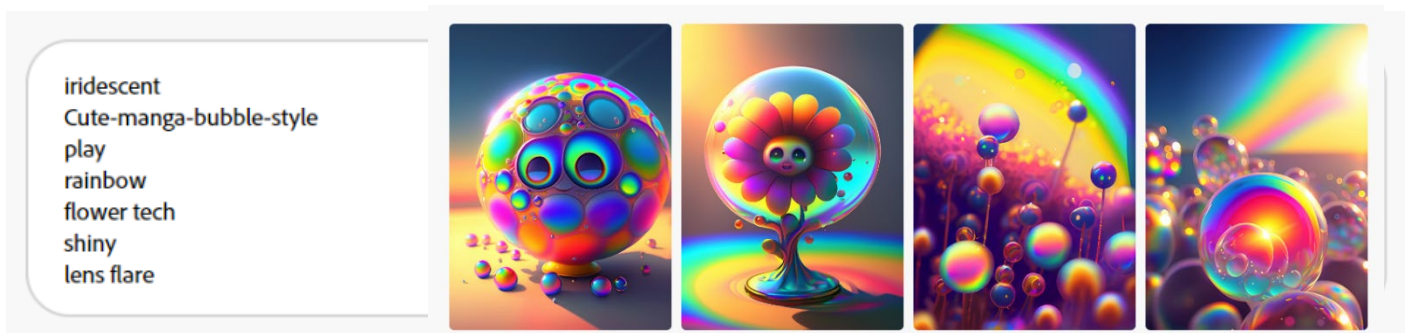
Now you know some terms, let's play. In this example, the words in "[]", reference the first guide and are not typed in the chat window.

We entered:

[prepend] iridescent
Cute-manga-bubble-style
[first word] play
rainbow
flower tech
shiny
lens flare
sunrise background

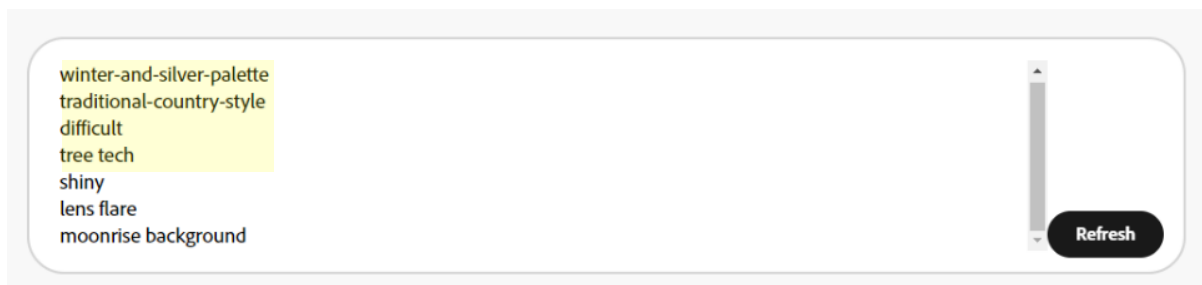


Let's see the results.

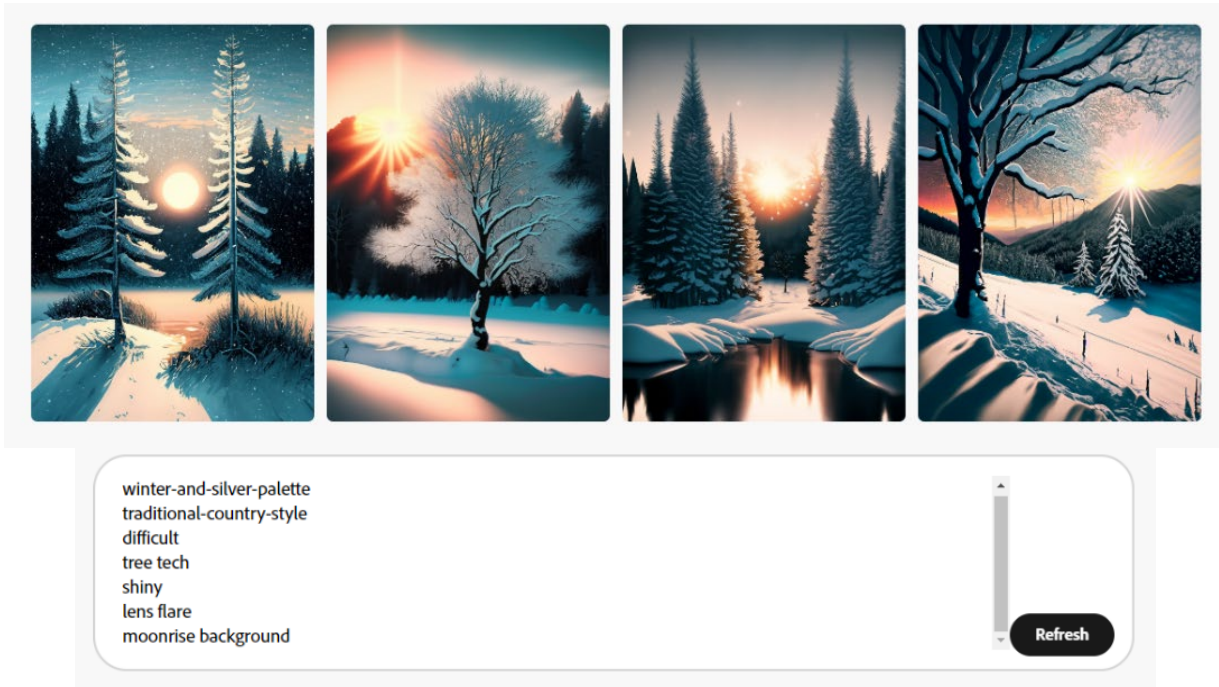


Use this to generate the Scene, Palette, and Effect words from the beginning of this guide to chat with Firefly.

To test how well Firefly likes chatting in its lingo, let's completely flip this result.

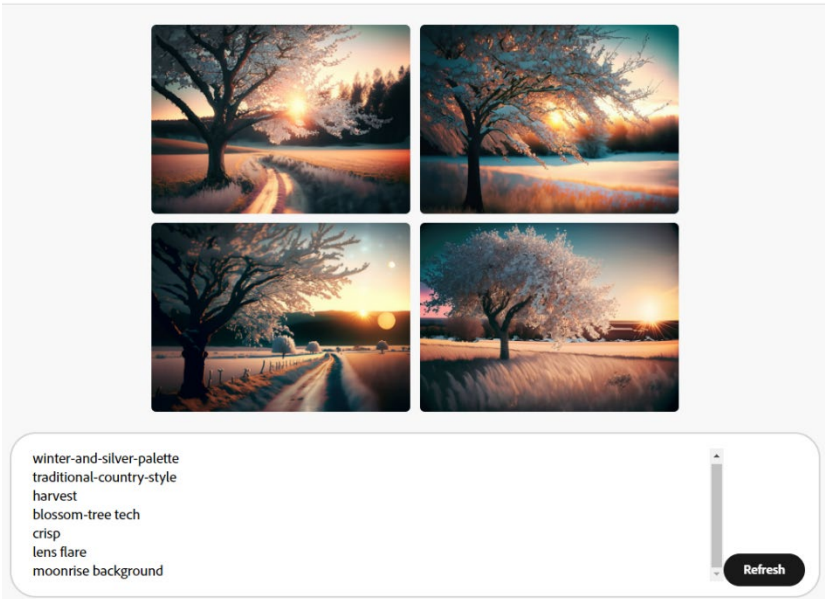


We set the scene with a "winter-and-silver-palette" and style "traditional-country-style", and changed "play" to "difficult".



Modify your tech with descriptive words like, "blossom-tree-tech"

Not only did it change the entire scene, it also changed how it draws the images in the result.



Keep these terms in mind when generating with Adobe Firefly. Come up with your own and let us know your results!

Order of Operations 1.2 Why It Matters

You've made it through the first wave of excitement and now you are ready to put your foot on the gas. Well, let's learn a few things about how this lovely engine might work for optimum performance.

We've tried FLESHING-OUT our picture, procedurally. We have the bones. Now, let's add veins and muscles shall we?

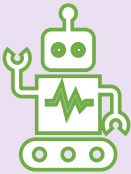


Hint: It's a computer. Give it "commands" in a sequence and watch Firefly go.

Tip: If you have gotten a warning on a previous design, or on any future designs, take a moment and submit a comment. It is important for Adobe to know what you were intending.

Before we Begin

Be sure to set your aspect ratio (is this a wallpaper for a phone? computer?). Also, select Art as a starting place. Alright, let's get to it.

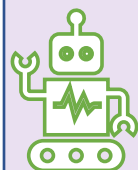


AI reads all of the tags connected by **dashes** and is aware that they are grouped together. Adding "**style**" on the end makes the description affect the entire drawing without to adding subject matter.

Lesson One: Command Prompts and the First Word

Let's learn from other robots and start with a prompt!

- 1) Choose a prompt from the list below and type it into the Firefly bubble exactly as you see it. In this example, we chose "Gorgeous-anime-dramatic-style"
 - 1a) Bright-steampunk-style
 - 1b) Dank-fantasy-style
 - 1c) Dark-magic-realistic-perfect-anatomy-style
 - 1d) Cute-manga-bubble-style
 - 1e) Gorgeous-anime-dramatic-style



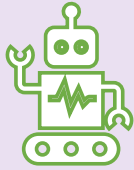
AI reads all of the tags connected by **dashes** and is aware that they are grouped together. Adding "**style**" on the end makes the description affect the entire drawing without adding subject matter.

Gorgeous-anime-dramatic-style



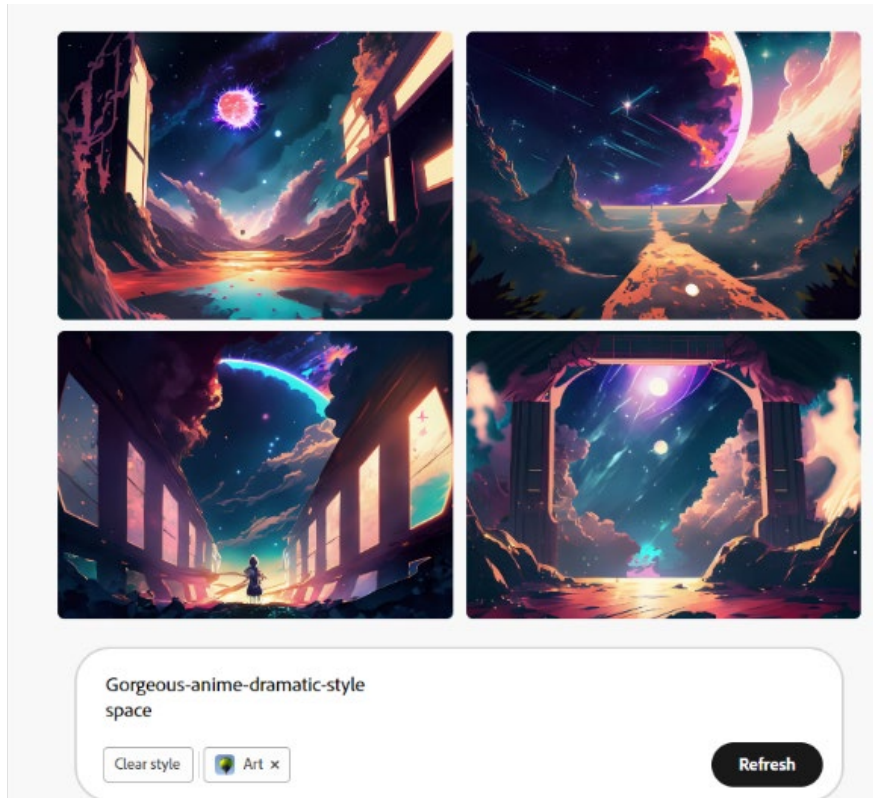
- 2) Press "Shift + Enter". Add a first word. This is the First Word. Enter your first word. We are building a string. Choose from below if you like. In the example, we chose **space**:

- 2a) chakra
- 2b) cardiovascular
- 2c) Labrador
- 2d) skull
- 2e) octopus



The **FIRST WORD** is what is most important. The AI doesn't bummer with planning, it begins drawing based on the **LIST** of instructions. The **FIRST WORD** in your list is what the AI will focus on the most. Also, using "Shift + Enter" to separate your lines makes a world of difference.

- 3) **GENERATE!** [Let's see what this does! NICE!!!] These were our results:

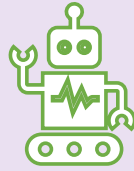


Lesson Two: Word Appending

Append (means add to the end) one of these to the end of the description.

4) Choose from below if you like:

- 4a) smiling
- 4b) lightning imbued
- 4c) chromatic
- 4d) rainbow
- 4e) on fire



We haven't added a subject-person. We are setting the theme. If you add a "frog", append "smiling" to frog with a "-". That will set the word to the frog. If you add "smiling" at the end, it will change the entire scene.

5) **GENERATE.** [OOooh.. Not bad though.]

Appending a "tech" option just makes another control available to the AI!

6) Put a tech option on the end.

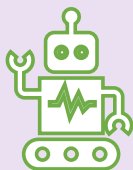
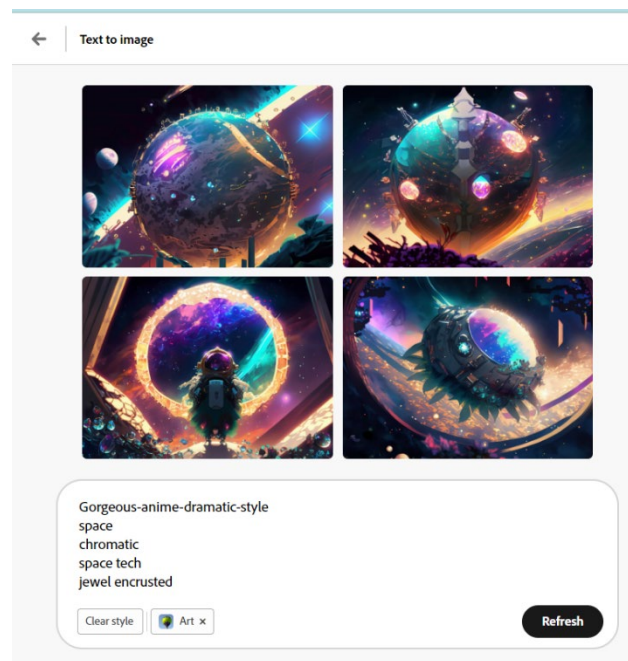
- 6a) space tech
- 6b) doom tech
- 6c) flower tech
- 6d) feather tech
- 6e) clock tech

7) **GENERATE.** [HA ha HA ha!! Oh wait, that's awesome...]

Next, append a choice from the lesser known plane of bling-stank.

8) Choose an option to "bling" it up.

- 8a) jewel encrusted
- 8b) grimy
- 8c) shiny
- 8d) reflective
- 8e) cracked



AI understands "tech" like a special effect. Shift + Enter is a lovely command that breaks up your prompt, great for humans. It also makes it easy for modification!

Lesson Three: Modifiers

Now that you understand "append", let's further classify what we add. Introducing Modifiers.

9) Append a modifier for the scene:

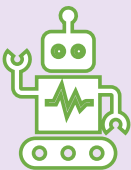
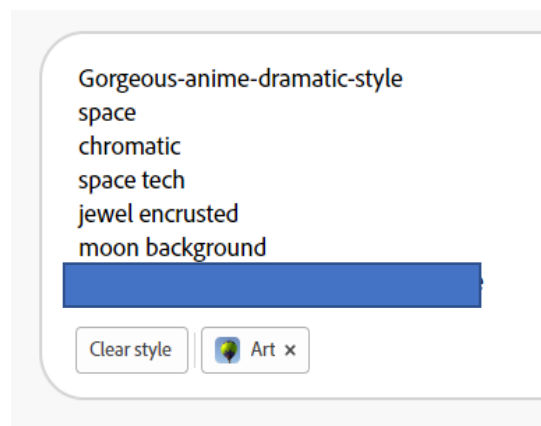
- 9a) sunbeams
- 9b) lens flare
- 9c) sunrise
- 9d) crescent moon
- 9e) light bloom

Next append a command background elements. In this example, we chose moon background.

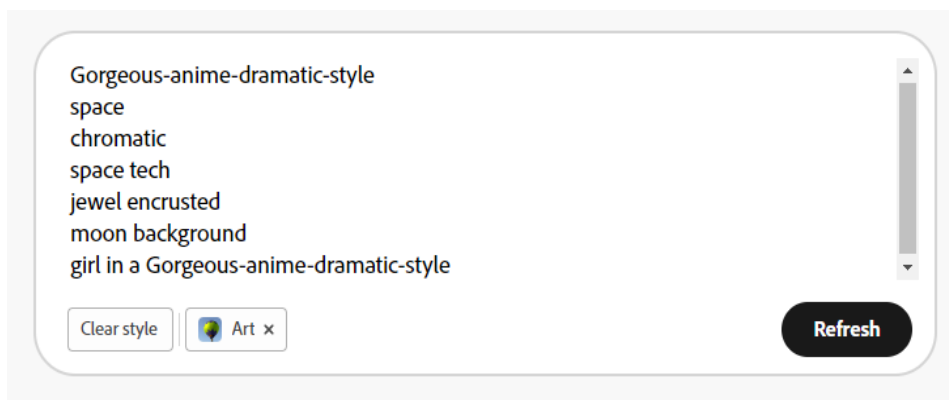
10) Add a background

- 10a) sunrise background
- 10b) crescent moon background
- 10c) tombstones background
- 10d) mushrooms background
- 10e) high tech background

10) **GENERATE** <-- you'll probably like this a lot




For an extra layer of focus, add a subject. Give the subject you add a focus point or description. This will tell the AI what "type" of girl to generate.



GENERATE <-- you'll probably like this a lot. Let's see what we get.

← | Text to image




Gorgeous-anime-dramatic-style
space
chromatic
space tech
jewel encrusted
moon background
girl in a Gorgeous-anime-dramatic-style

Clear style Art x Refresh

Adding the subject focus last, built the digital canvas for the AI to understand.

With parameters set, the added subject is more likely to fit with the intended design.

But does it really make that much of a difference? We tested the outcome without the ordered prompts.



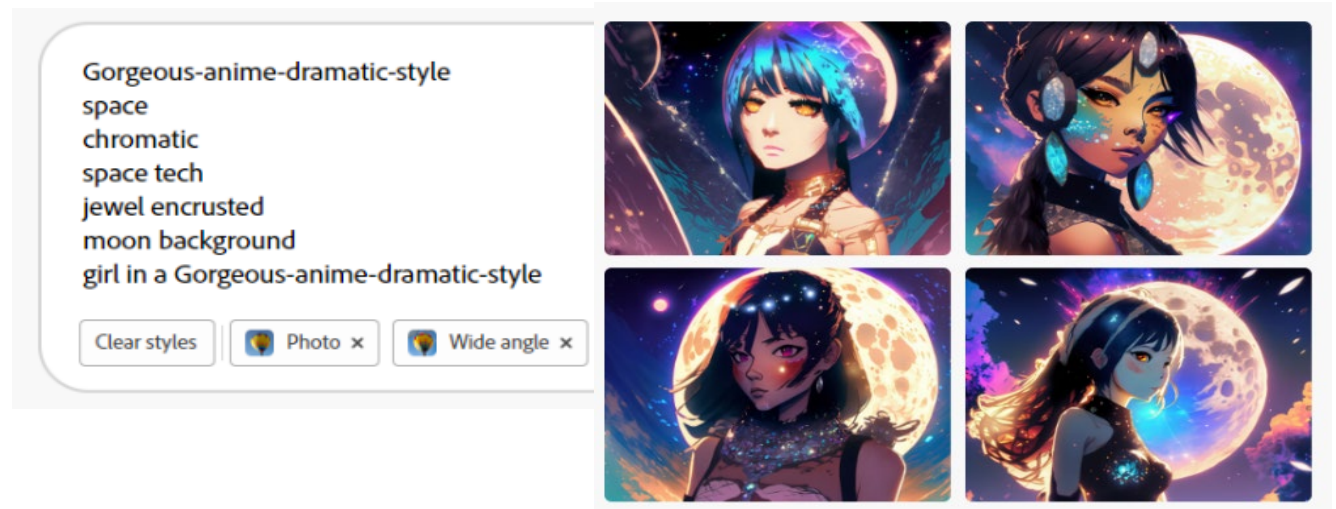
Gorgeous-anime-dramatic-style

Clear style Art x Refresh

Using style without a first word and string formula, produces a very different result.

The images are great but the AI just doesn't have enough information or instruction on what is a priority to produce an optimum result.

Think of your sentence. Now imagine you are painting it. What do you begin with first on a canvas?



Firefly is literally painting for you.
Based on your words. Change the words and order and see the results.

Lesson Four: Prepend Words

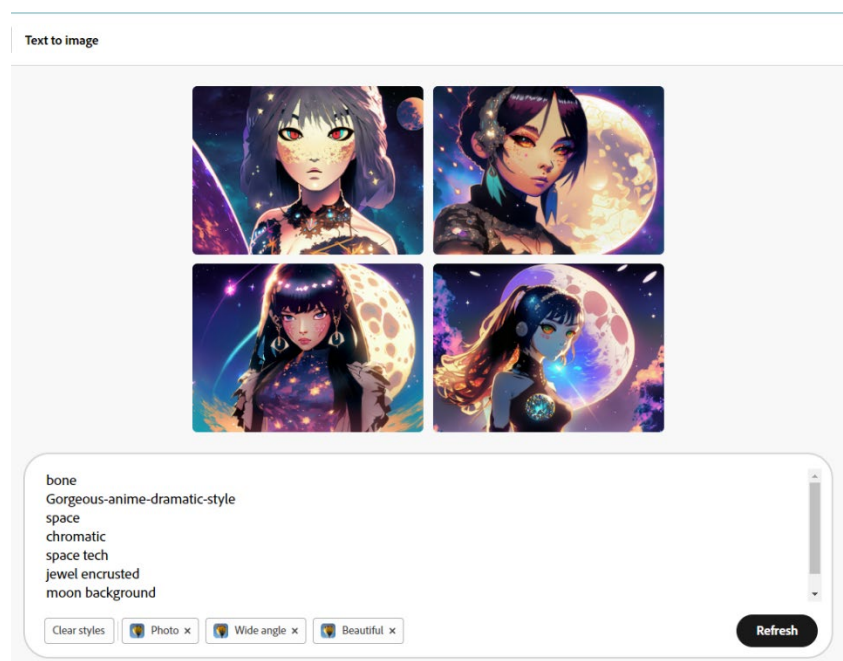
You can add an overall effect with a "prepend" command. Your finishing touches are just a word away. Give it a good swirl, Yvie Oddly style!

11) Go to the BEGINNING of the line, start of the FIRST WORD. PREPEND one of these or choose your own.

- 11a) iridescent
- 11b) chromatic
- 11c) rainbow
- 11d) brooding
- 11e) bone

We chose bone.

12) **GENERATE!**



Images Created with the Intermediate 1.0 Guide to "Fireflying"



Thank you, The Muse Tech Consulting design team, and its lead, affectionately known as the "AI Whisperer", for his insight and programming knowledge, which is the secret to our amazing results with Adobe Firefly. If you found this helpful, we would love to hear from you (mtcllc@musetechconsulting.com)

Happy Fireflying!

